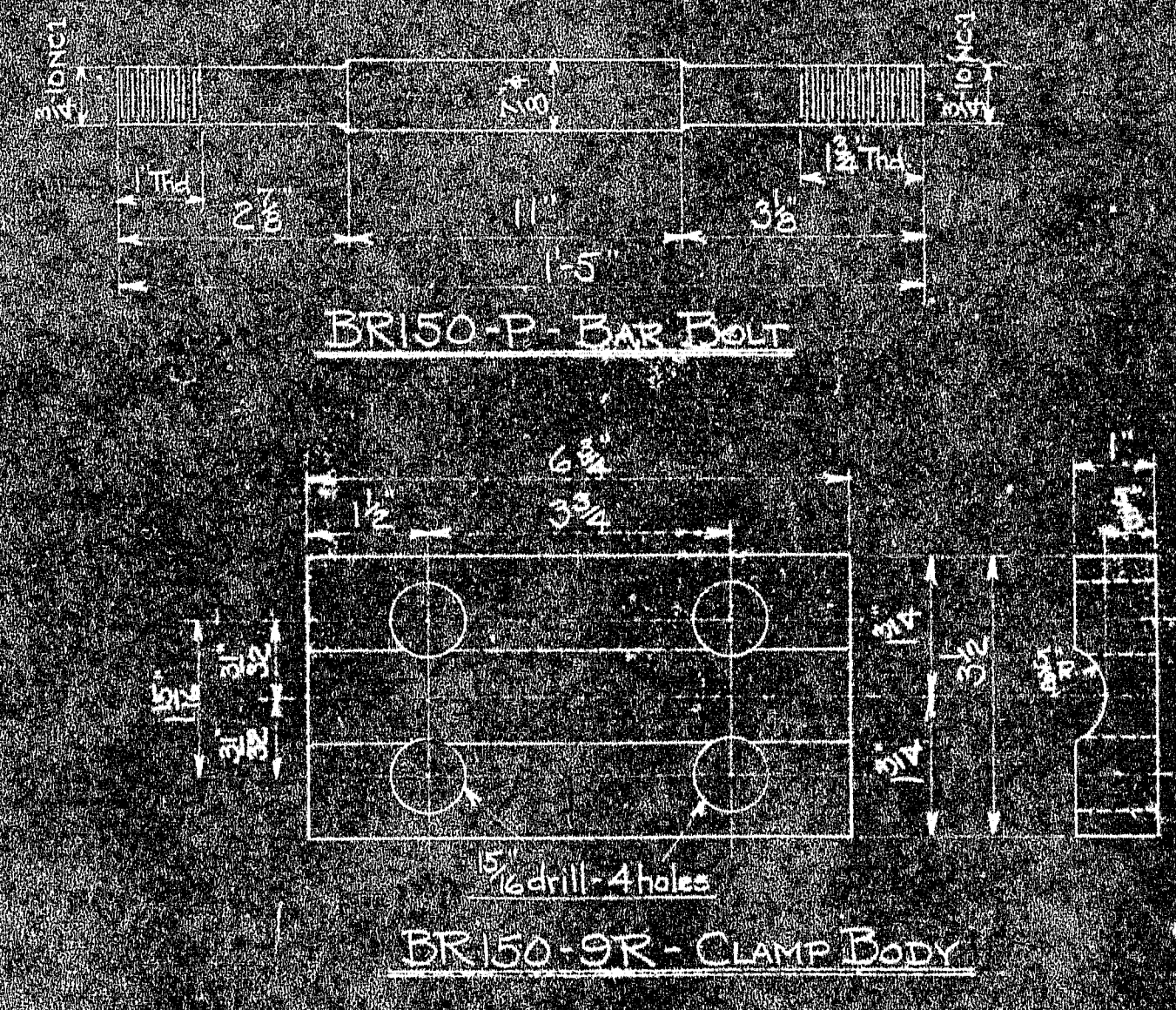
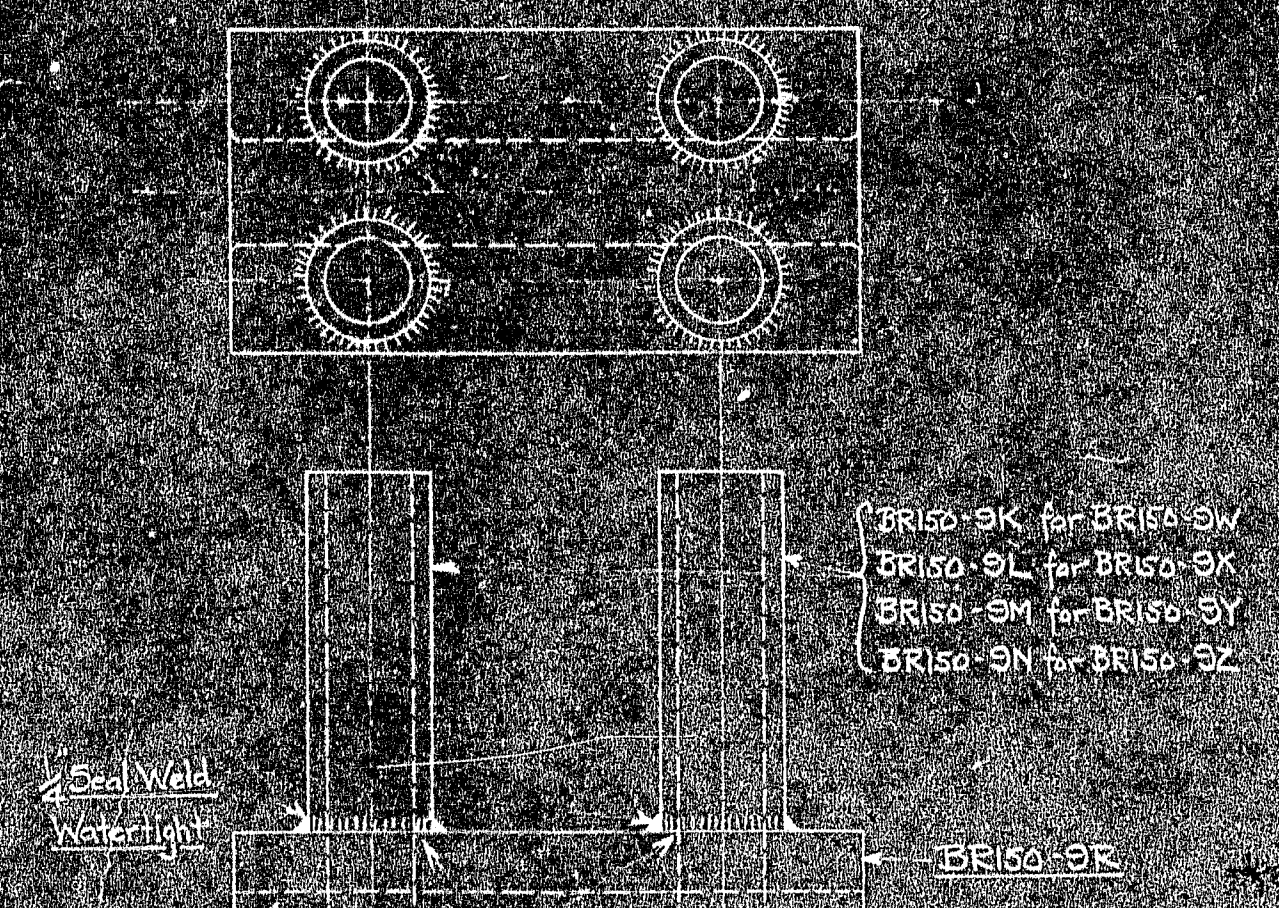
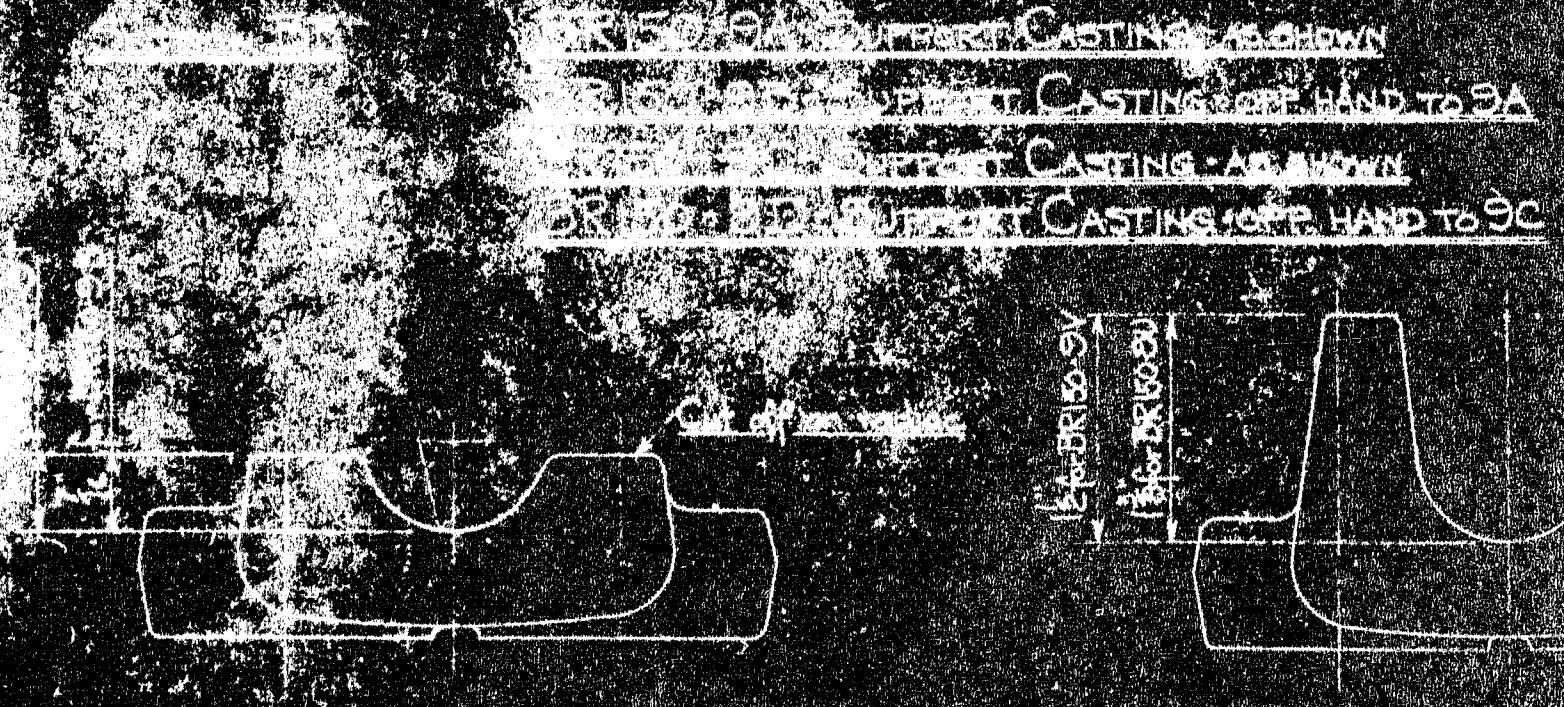
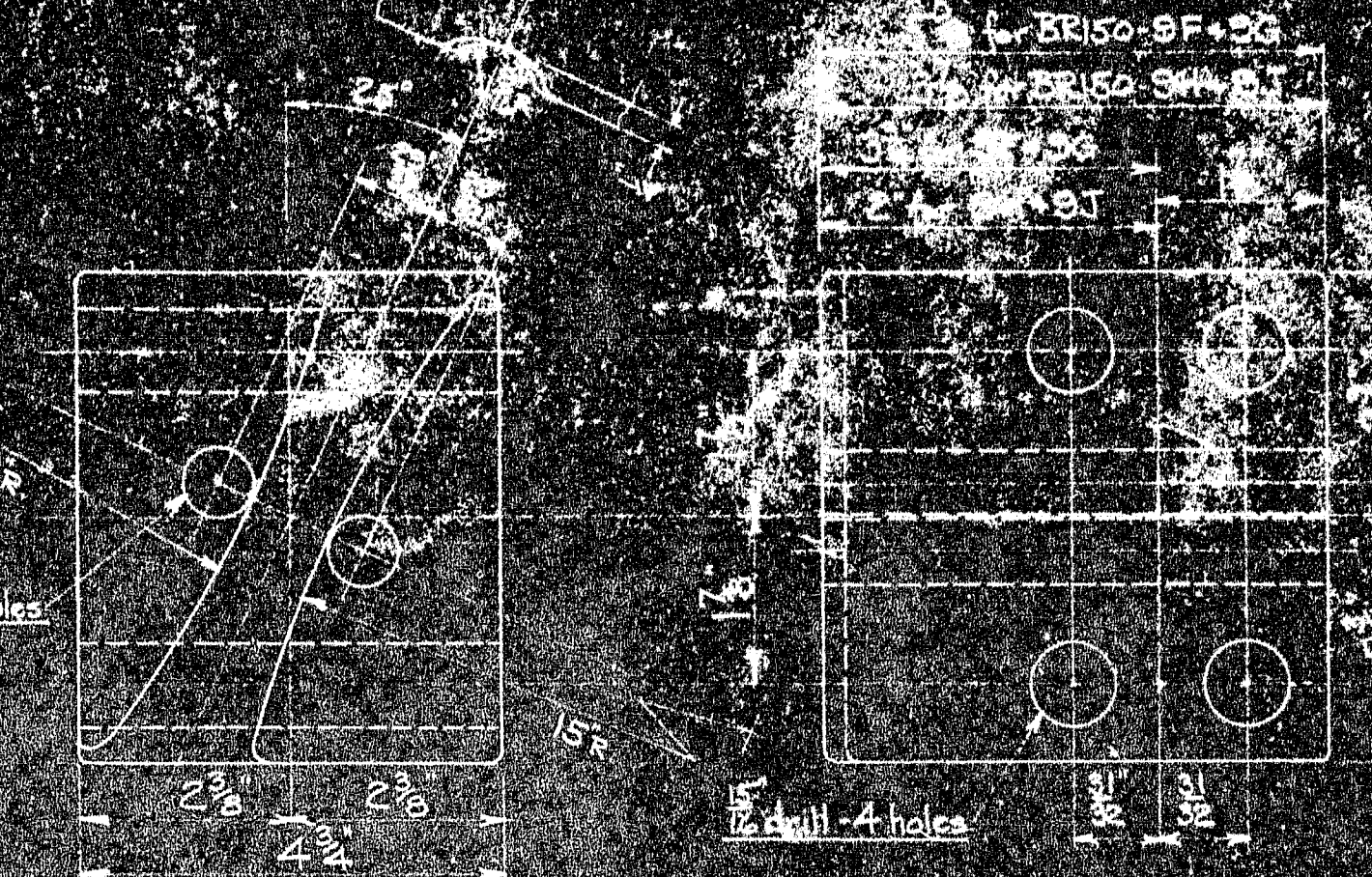
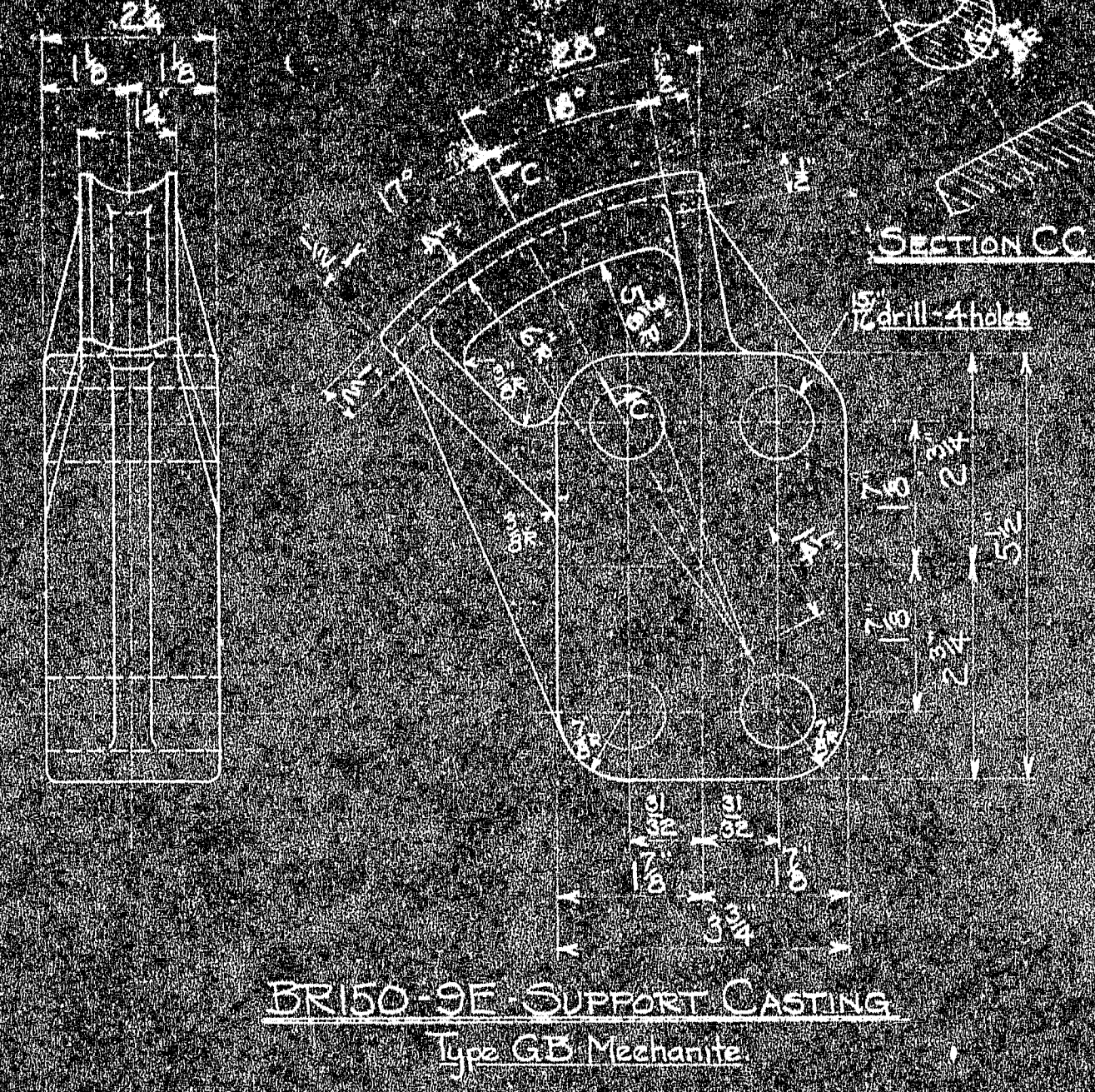
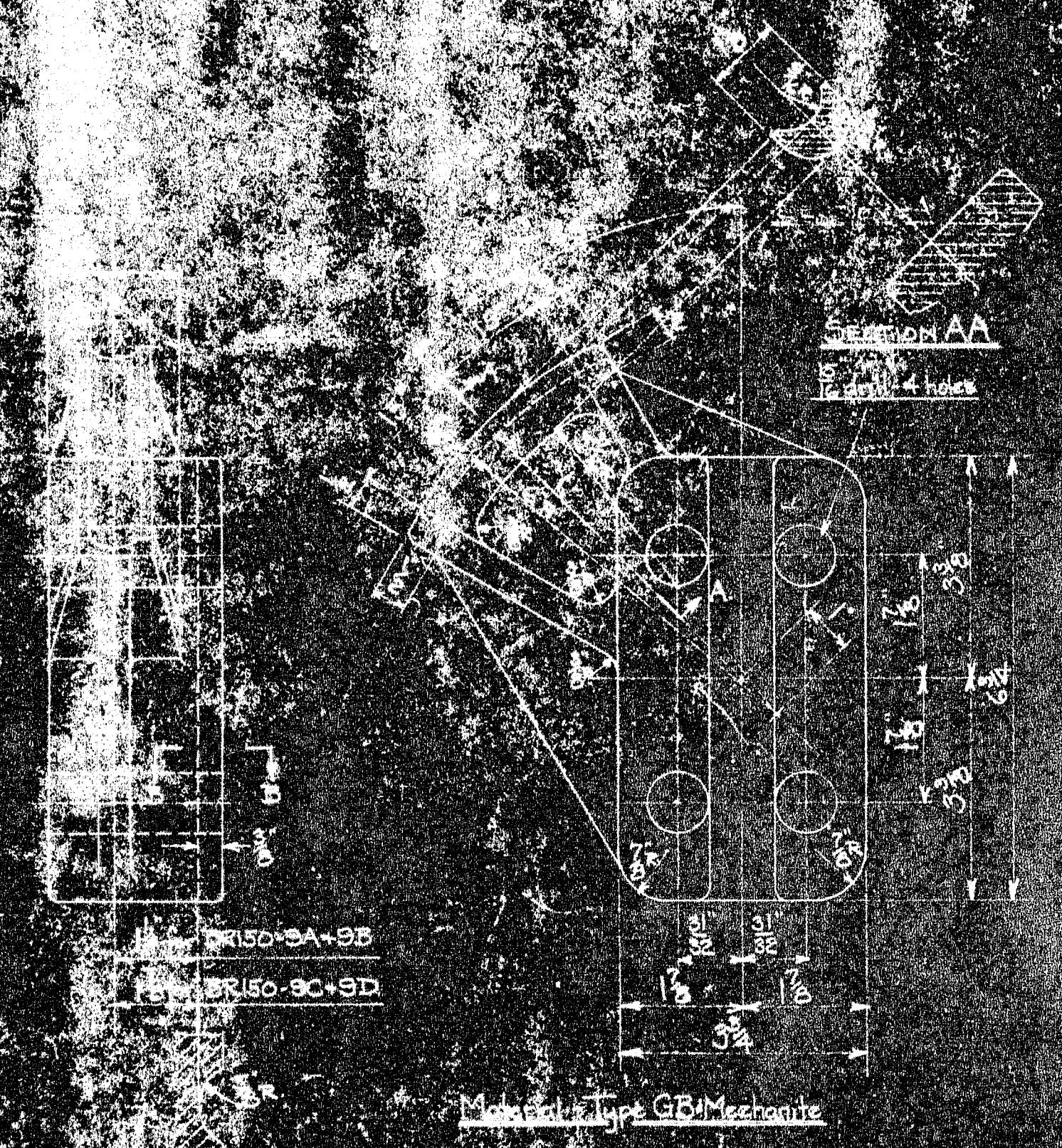


SUPPORT C - FOR 1 1/2 BRIDGE CABLE STAYS AT P.P. 15-16 AND 19

SUPPORT D - FOR TRANSVERSE STAYS AT P.P. 10 AND 11
SUPPORT E - FOR TRANSVERSE STAYS AT P.P. 23 AND 24



BR150-9S - 1" CLIP BODY-ALTERED
BR150-9T - 1 1/2" CLIP BODY-ALTERED
BR150-9U - 1 1/2" CLIP BODY-ALTERED
BR150-9V - 1 1/2" CLIP BODY-ALTERED

BR150-9W - CLAMP BODY ASSEMBLY
BR150-9X - CLAMP BODY ASSEMBLY
BR150-9Y - CLAMP BODY ASSEMBLY
BR150-9Z - CLAMP BODY ASSEMBLY

ITEM NO.	QTY	UNIT	DESCRIPTION	REMARKS
BR150-9ak	544	-	1/2" Lock Washer - Galv.	
BR150-9al	544	-	1/2" Semi-Finished Hex Nut - Galv.	
BR150-9ah	48	-	1/2" Elastic Stop Nut - 304 U.S.	
BR150-9ai	32	-	1/2" Plastic 1/2" Nut - 304 U.S.	
BR150-9aj	32	-	1/2" 1/2" Thread for 1/2" Rope Clip - Galv.	
BR150-9ak	32	-	1/2" 1/2" Bolt for 1/2" Rope Clip - Galv.	
BR150-9al	24	-	1/2" 1/2" Hex Hd Bolt - 1/2" Nut - Galv.	
BR150-9ac	16	-	1/2" 1/2" Hex Hd Bolt - 1/2" Nut - Galv.	
BR150-9ab	52	-	1/2" 1/2" Bolt - 1/2" Nut - Lock Washer	
BR150-9am	500	-	1/2" Bolt - 1/2" Nut - Lock Washer	
BR150-92	16	-	1/2" 1/2" Bolt - 1/2" Nut - Lock Washer	
BR150-91	8	-	1/2" 1/2" Bolt - 1/2" Nut - Lock Washer	
BR150-9X	48	-	1/2" 1/2" Bolt - 1/2" Nut - Lock Washer	
BR150-9W	40	-	1/2" 1/2" Bolt - 1/2" Nut - Lock Washer	
BR150-9V	24	Steel	1/2" 1/2" Bolt - 1/2" Nut - Lock Washer	
BR150-9U	24	Steel	1/2" 1/2" Bolt - 1/2" Nut - Lock Washer	
BR150-9T	272	Steel	1/2" 1/2" Bolt - 1/2" Nut - Lock Washer	
BR150-9S	20	Steel	1/2" 1/2" Bolt - 1/2" Nut - Lock Washer	
BR150-9R	112	Steel	1/2" 1/2" Bolt - 1/2" Nut - Lock Washer	
BR150-9Q	372	Steel	1/2" 1/2" Bolt - 1/2" Nut - Lock Washer	
BR150-9P	6	Pipe	1/2" 1/2" Bolt - 1/2" Nut - Lock Washer	
BR150-9O	16	Pipe	1/2" 1/2" Bolt - 1/2" Nut - Lock Washer	
BR150-9N	16	Pipe	1/2" 1/2" Bolt - 1/2" Nut - Lock Washer	
BR150-9M	6	Sealant	1/2" 1/2" Bolt - 1/2" Nut - Lock Washer	
BR150-9L	6	Sealant	1/2" 1/2" Bolt - 1/2" Nut - Lock Washer	
BR150-9K	4	Sealant	1/2" 1/2" Bolt - 1/2" Nut - Lock Washer	
BR150-9J	4	Sealant	1/2" 1/2" Bolt - 1/2" Nut - Lock Washer	
BR150-9I	4	Sealant	1/2" 1/2" Bolt - 1/2" Nut - Lock Washer	
BR150-9H	4	Sealant	1/2" 1/2" Bolt - 1/2" Nut - Lock Washer	
BR150-9G	4	Sealant	1/2" 1/2" Bolt - 1/2" Nut - Lock Washer	
BR150-9F	4	Sealant	1/2" 1/2" Bolt - 1/2" Nut - Lock Washer	
BR150-9E	4	Sealant	1/2" 1/2" Bolt - 1/2" Nut - Lock Washer	
BR150-9D	4	Sealant	1/2" 1/2" Bolt - 1/2" Nut - Lock Washer	
BR150-9C	4	Sealant	1/2" 1/2" Bolt - 1/2" Nut - Lock Washer	
BR150-9B	4	Sealant	1/2" 1/2" Bolt - 1/2" Nut - Lock Washer	
BR150-9A	4	Sealant	1/2" 1/2" Bolt - 1/2" Nut - Lock Washer	

MARK	REQ'D	MAT'L	REQ. NO.	NAME	REMARKS
BILL OF MATERIAL					
JOHN A. ROEBLING'S SONS CO., TRENTON, N. J.					
DEER ISLE BRIDGE REINFORCEMENT					
ASSEMBLY AND DETAILS OF SUPPORTS					
FOR LONGITUDINAL AND TRANSVERSE STAYS					
REVISIONS					
BY	APPROVED	DATE	SCALE	SERIAL	SHEET
ROBINSON AND STEINMAN	MARCH 16, 1944	3/16/44	3/16/44	BR150	5
CH. DR.	ENG'R				

